

Electro-hydraulic Operating Table

medsurge 
technics for life

 **mediland**



ELECTRO-HYDRAULIC OPERATING TABLE C800

Providing precise positioning and speed control with a patented high-end hydraulic system to improve workflow. Tailored for all-purpose surgeries.



Features

- Patented hydraulic speed control system.
- Interchangeable operating table head and leg section.
- Superior table height total stroke.
- Trend/Reverse Trend asymmetric angle design.
- Numerous positioning memory functions (Wireless tablet limited)



Specifications

- | | |
|------------------------------------|------------------|
| • Table Length | 2,072 mm |
| • Table Width (Without Side Rails) | 520 mm |
| • Table Height (Without Mattress) | 600~1,100 mm |
| • Trendelenburg / Reverse Trend | 21° / 31° |
| • Lateral Tilt (L / R) | 20° / 20° |
| • Head Section (Up / Down) | 60° / 90° |
| • Shoulder Section (Up / Down) | N/A |
| • Back Section (Up / Down) | 80° / 50° |
| • Leg (Up / Down) | 20° / 90° |
| • Leg (Open / 2 Plates) | N/A |
| • Flex / Reflex | 230° / 100° |
| • Weight Capacity | 454 kg / 1000lbs |

Configuration

- Extra Shoulder Section (E)
- Carbon Fiber Built-In Kidney Elevator (K) 120mm
- Electrical Sliding Longitudinal 300mm
- Auto-Leveling

Accessories



Armboards/Arm Supports



General Accessories



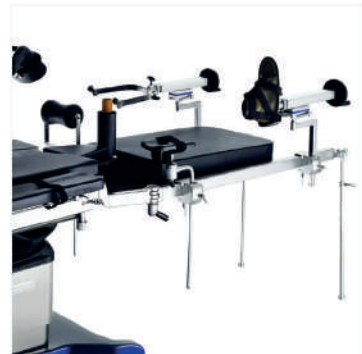
Headrests & Adapters



Mattress



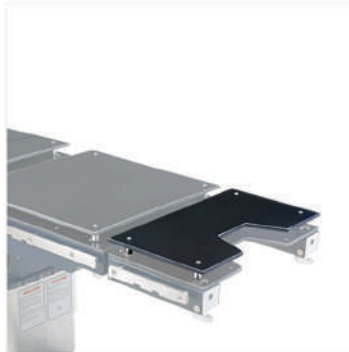
Skin Pressure Relief Pad



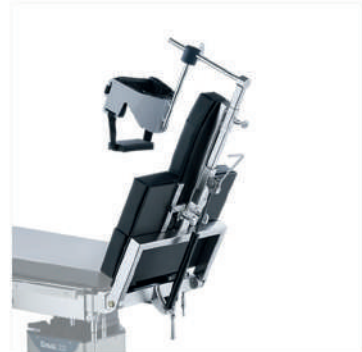
Orthopedics Extension



Patient Fixation



Radiology Accessories



Shoulder Surgery
Accessories



Table Extender



Table Operating Controller



Urology/Gynecology
Surgery Accessories



MEDSURGE HEALTHCARE LIMITED
MUSEUM HILL CENTRE, MUSEUM ROAD
P.O. BOX 75534 00200
NAIROBI, KENYA
Tel: 0720 714 337
Email: info@medsurgehealth.co.ke
Web: www.medsurgehealth.co.ke