

# Pelvic Binder

**medsurge**   
*technics for life*

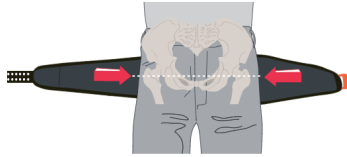


## **PELVIC BINDER**

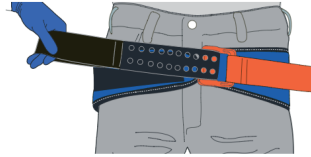
### **DESCRIPTION**

The Pelvic Sling is the first and ONLY force-controlled circumferential pelvic belt. It is scientifically proven in peer-reviewed studies to safely and effectively reduce and stabilize open-book pelvic ring fractures. The Pelvic Sling was designed not to over-tighten or under-tighten, unlike other commercial binders which allow unlimited force to be applied to the patient. Researchers at Legacy Health System utilized cadaver studies and clinical trials to determine the optimum range of force required to safely and effectively close an unstable pelvic fracture.

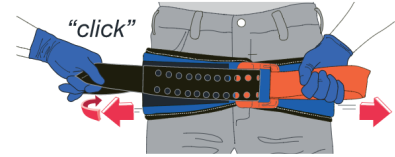
## 3-STEP APPLICATION



**01** Remove objects from patient's pocket or pelvic area. Place SAM® Sling II black side up, beneath patient at level of trochanters (hips).



**02** Place **BLACK STRAP** through buckle and pull completely through.



**03** Hold **ORANGE STRAP** and pull **BLACK STRAP** in opposite direction until you hear and feel the buckle "click". Maintain tension and immediately press **BLACK STRAP** onto surface of SAM® Pelvic Sling II to secure. (You may hear a second click as the sling secures.)

## FEATURES AND BENEFITS

- Scientifically and clinically proven to provide safe and effective force to stabilize pelvic fractures
- Buckle maintains correct force; cannot be over-tightened
- Standard size fits 98% of population, Small and Large sizes available for children or large patients
- "Click" provides clear feedback to confirm correct application
- Pulling gradually and symmetrically increases sling tension and reduces the pelvis
- Low friction posterior slider facilitates transfers
- Front of Sling is narrow and tapered to facilitate urinary catheterization, interventional radiology, external fixation and abdominal surgery
- Fabric does not stretch and cleans for reuse with standard detergents or antimicrobial solutions
- Radiolucent (allowing for X-rays and CT-scans without removal)
- Ease of application: just insert belt through buckle, pull strap, and secure
- Velcro on strap and sling for quick and easy fastening
- Reusable, not a onetime use device
- Latex free

## TECHNICAL DATA

- Small: Hip Circumference: 27"-47" (69cm x 119cm); 9oz
- Standard: Hip Circumference: 32"-50" (81cm x 127cm); 9oz
- Large: Hip Circumference: 36"-60" (91cm x 152cm); 9oz
- Military: Hip Circumference: 32"-50" (81cm x 127cm); 9oz



MUSEUM HILL CENTRE, MUSEUM ROAD  
P.O. BOX 75534 00200  
NAIROBI, KENYA  
Tel: 0720 714 337  
Email: [info@medsurgehealth.co.ke](mailto:info@medsurgehealth.co.ke)  
Web: [www.medsurgehealth.co.ke](http://www.medsurgehealth.co.ke)