

# WORKSTATION TROLLEY

**medsurge**   
technics for life



## Workstation Trolley

### **Description**

A nurse workstation trolley, also known as a nursing cart or medication cart, is a mobile storage unit designed specifically for healthcare settings such as hospitals, clinics, and long-term care facilities.



### Essential Information

- -Work Series Workstation Trolley (Electric control)
- Model Number: JDECF383C
- Dimension: 560\*592\*990mm (To tabletop)
- Table size: 541\*495mm
- Base size: 523\*413mm
- Bracket height: 340mm
- Display lifting stroke: 150mm
- Caster diameter:  $\varphi$ 100mm

## Product Features



Aluminum alloy lifting column, stable operation, no sanitary corners; Aviation aluminum display bracket, load-bearing 25kg, vertical adjustment angle:  $-5^{\circ}$ - $15^{\circ}$ , horizontal adjustment angle:  $0^{\circ}$ - $180^{\circ}$



The countertop lamp is controlled by a touch switch, and the brightness is adjusted by touch, which is convenient for night work (optional).



The keyboard light is controlled by a touch switch, and the brightness is adjusted by touch, which is convenient for the recording of medicines at night, etc. (optional)

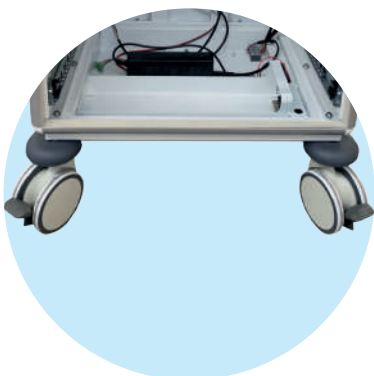


The workstation trolley is equipped with five drawers. Each drawer is equipped with five distribution medicine boxes.

- Sliding transparent cover, easy to check the status of the medicine.
- The box will not slip off when it is pulled out separately from the tray, and it is safer.
- The position of the partition can be adjusted for early, mid, late, and night (ampoules, tablets, granules, etc.).
- The label can be replaced (medicine name, or bed number).
- Status toggle button, visual management; Blue label means undispensed medicine, red label means dispensed medicine.
- Five drawers, 5pcs distribution medicine boxes on each drawer, 25pcs distribution medicine boxes in all.



The bottom drawer is equipped with silent sliding rails, which are convenient for storage and smooth drawing, with adjustable PC dividers, which can divide the storage space, with a Zinc alloy handle.



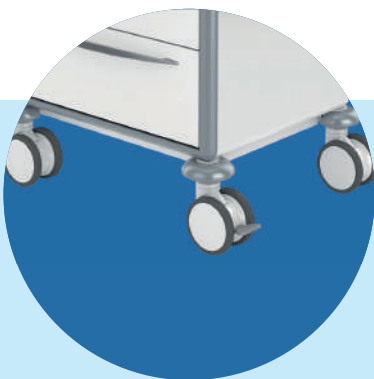
Under the bottom drawer, there is a battery compartment, which can be equipped with hot-swappable batteries



The left side is equipped with a hidden pop-up extension table.



5-inch capacitive touchscreen.

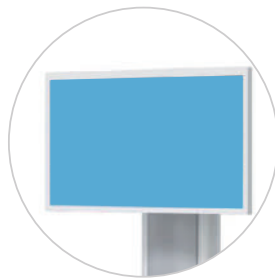


Four  $\phi 100\text{mm}$  silent universal double-sided castors, with bump protector

## Optional Accessories



Battery group



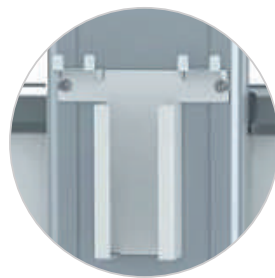
Computer and display



Storage box



Folding chair



Micro host box bracket



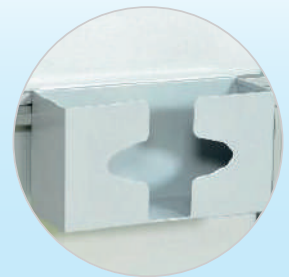
Power outlet



Disinfectant holder



Countertop lamp



Glove box holder

## Workstation Series AIO (Optional)

Medical grade all-in-one computer (support 4G/5G wifi network)



EPC-21501  
Built-in fan, suitable for outpatient and ward



EPC-21504  
No fan, suitable for operating room and ICU



**CPU**  
i5 7300U WIN10 System



**Screen**  
21.5 inch LED  
Resolution 1920\*1080



**Keyboard and Mouse**  
Wireless Mouse



**One button control**  
One button control switch,  
sleep and wake up with  
breathing light



**Battery**  
Lithium iron phosphate battery, continuous charging  $\leq 5$  hours, continuous working  $\geq 12$  hours, standby  $\geq 18$  hours



**Audio player**  
Built-in speaker, output voice without interference




**Battery protection**  
With low power alarm and sleep protection function, effectively prevent power depletion caused by hard shutdown



**Battery status**  
Battery management and real-time power working time

## Battery Matching Solution

| Solution                                | Solution A   | Solution B   |
|---|--|--|
| Package Contents                        | <br>1 Battery+1 Charger | <br>2 Battery+1 Charger |
| Function                                | The battery powers the trolley lift only   | The battery powers the trolley lift and computer at the same time  |
| Battery Durability                      | Standard Range Edition   | Upgraded Range Edition   |
| Charge Mode                             | Plug-and-Play  | Hot Swapping   |
| Battery Capacity                        | 10AH/pc  | 12AH/pc  |
| Charging Time                           | 4-5H   | 4-5H   |
| Usage Duration                          | 8-10H  | 8-10H  |
| Application Scenarios                   | 8-10 Hour Work Place   | 8-10 Hour Work Place   |
| Applicable AIO size                     | 18.5in-22in  | 18.5in-22in  |
| Does AIO need to bring its own battery? | Y  | N  |



## Application Scenario





**MEDSURGE HEALTHCARE LIMITED**  
MUSEUM HILL CENTRE, MUSEUM ROAD  
P.O. BOX 75534 00200  
NAIROBI, KENYA  
Tel: 0720 714 337  
Email: [info@medsurgehealth.co.ke](mailto:info@medsurgehealth.co.ke)  
Web: [www.medsurgehealth.co.ke](http://www.medsurgehealth.co.ke)